

# Townhouse



## 14 Pennington Gardens

4 Bedrooms, 1 Bathroom  
1 Ensuite, 1 Cloakroom

Total Internal Area  
175 sq m  
1883.7 sq ft

### Lower Ground Floor

Living  
5.24m x 5.87m  
17'2" x 19'3"

Kitchen  
4.68m x 2.94m  
15'4" x 9'7"

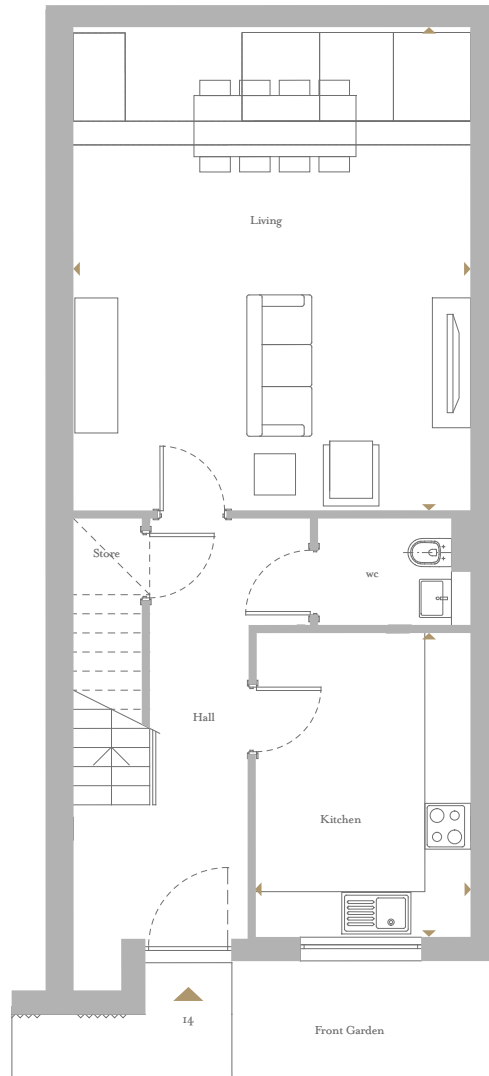
Reception  
5.24m x 4.33m  
17'2" x 14'2"

Bedroom 1  
5.24m x 3.89m  
17'2" x 12'9"

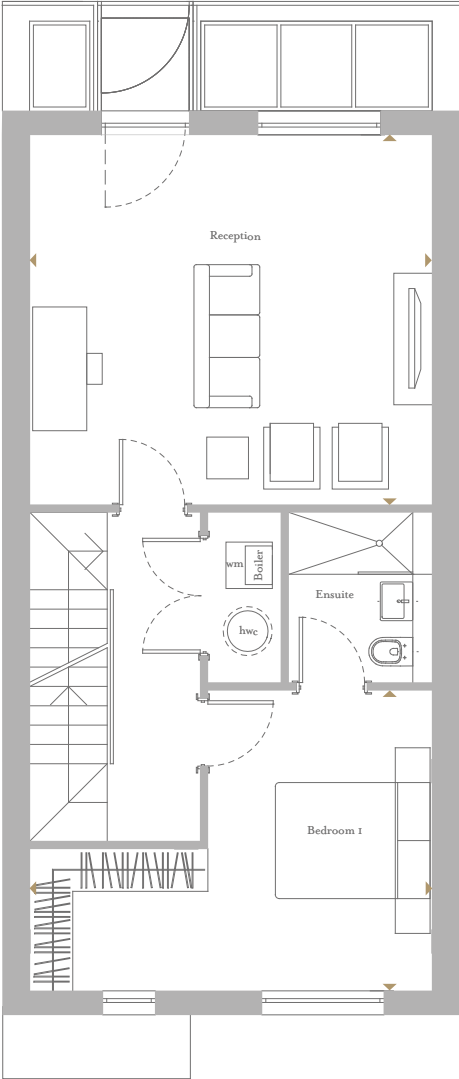
Bedroom 2  
2.44m x 4.33m  
8' x 14'2"

Bedroom 3  
2.70m x 4.56m  
8'10" x 14'11"

Bedroom 4  
5.24m x 3.76m  
17'2" x 12'4"



Ground Floor



First Floor

